



89 Totteridge Road

High Wycombe

HP13 6EY

Monthly Rental Of £1,650

- Three bedroom semi detached house
- Walking distance to train station and town
- Two reception rooms and separate kitchen
- Downstairs bathroom
- Available February 2024
- EPC Rating: D, Council Tax Band: C



T: 01494 358358

E: lettings@wyeres.co.uk

W: www.wyeres.co.uk

89 Totteridge Road High Wycombe HP13 6EY

PROPERTY FACTS

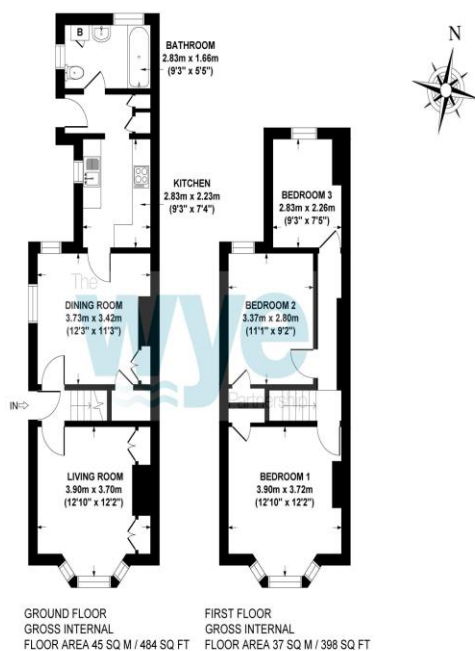
A character three bedroom house in the heart of High Wycombe within walking distance of the mainline train station. This modernised property has retained its character features and benefits from two reception rooms; one of which features a modern log burner. There is a stylish galley kitchen, well equipped utility space and downstairs bathroom. Upstairs are three good size bedrooms. To the rear is a layered garden with lovely views from the top. Parking is on street with resident permit. This property is available from February and early viewings are recommended.

LOCATION FACTS

Within a ten minute walk of High Wycombe town centre and train station with 25 minute trains to London as well as direct trains to Oxford and Birmingham. The town centre boasts plentiful amenities, extensive shopping, recreational to include many pubs and restaurants, 'The Swan theatre' and a bowling alley. It is also within catchment of the popular Hamilton Academy and other local schools. The beautiful Rye Park is close by with it's many attractions including a Lido, playgrounds and riverside cafe with boats for hire. Junction 3 & 4 for the M40 Motorway is just a short drive with access to London and The North.

DIRECTIONS

From our office in Crendon Street, ascend the hill and just after the railway station turn right into Totteridge Road where the property can be found on the left hand side shortly after the turning for Peterborough Avenue as indicated by a Wye Partnership To Let board.



TOTTERIDGE ROAD, HIGH WYCOMBE, HP13 6EY
APPROX. GROSS INTERNAL FLOOR AREA 82 SQ M / 882 SQ FT
FLOOR PLAN IDENTIFICATION PURPOSES ONLY -NOT TO SCALE

